

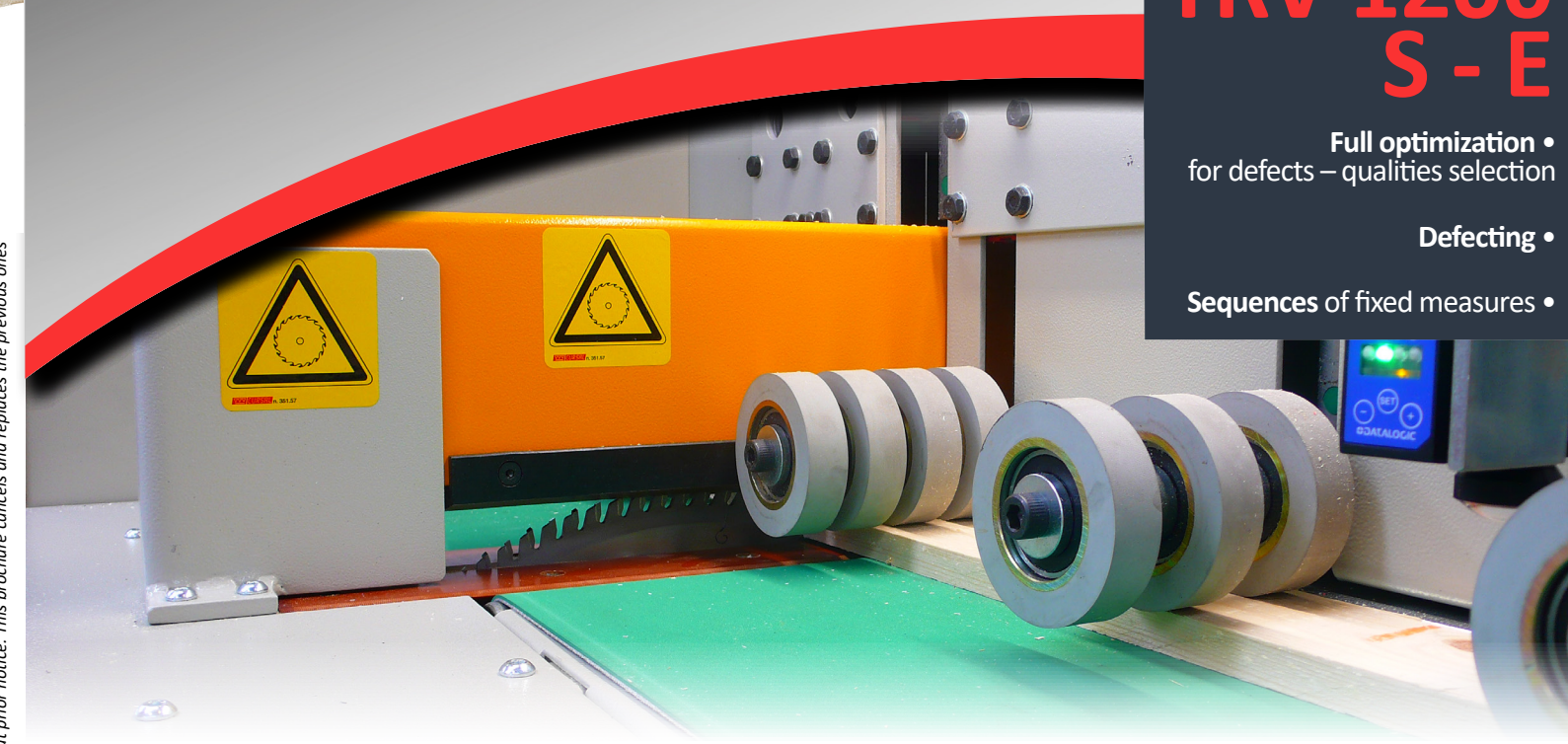
CURSAL

Crosscutting Solutions for the Solid Wood Industry

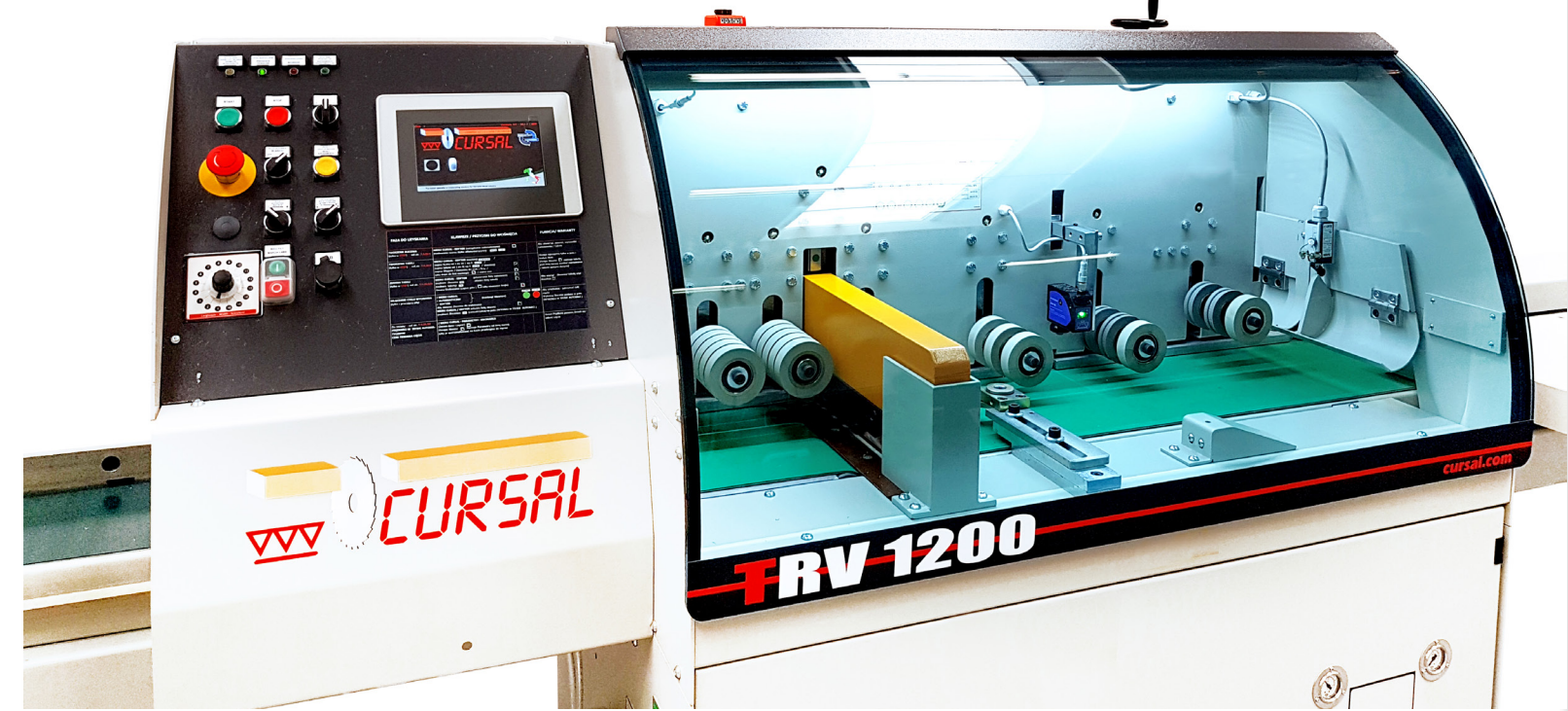
**HIGH SPEED
OPTIMIZING
CROSS-CUT SAW
SERIES**

TRV 1200 S - E

- Full optimization • for defects – qualities selection
- Defecting •
- Sequences of fixed measures •



The manufacturer reserves the right to make changes without prior notice. This brochure cancels and replaces the previous ones



WOOD CULTURE, EXPERIENCE, HIGH TECHNOLOGY

TRV 1200, TRV 1700 TRV 2200, TRV 2700 are much more than standard machines, are the result of clever details that make a real difference in the long run, **ensuring an unparalleled quality-price-performance ratio.** TRV 1200 is the optimizing cross-cut saw for the demanding customers who look for THE final SOLUTION for their company.

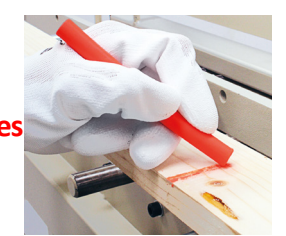
Standard technical data

Model	Power	Blade diameter	Height of the worktop	Dust outlet ϕ	Compressed air consumption	Average noise level on operator	Maximum feeding speed
	(kW)	mm.	mm.	mm.	nl/min.	DBA	mt./min.
TRV 1200 ϕ 500	7	ϕ 500 ϕ 35 Z/120	850 \pm 20	140 + 100	350	< 80	195 * self-limited

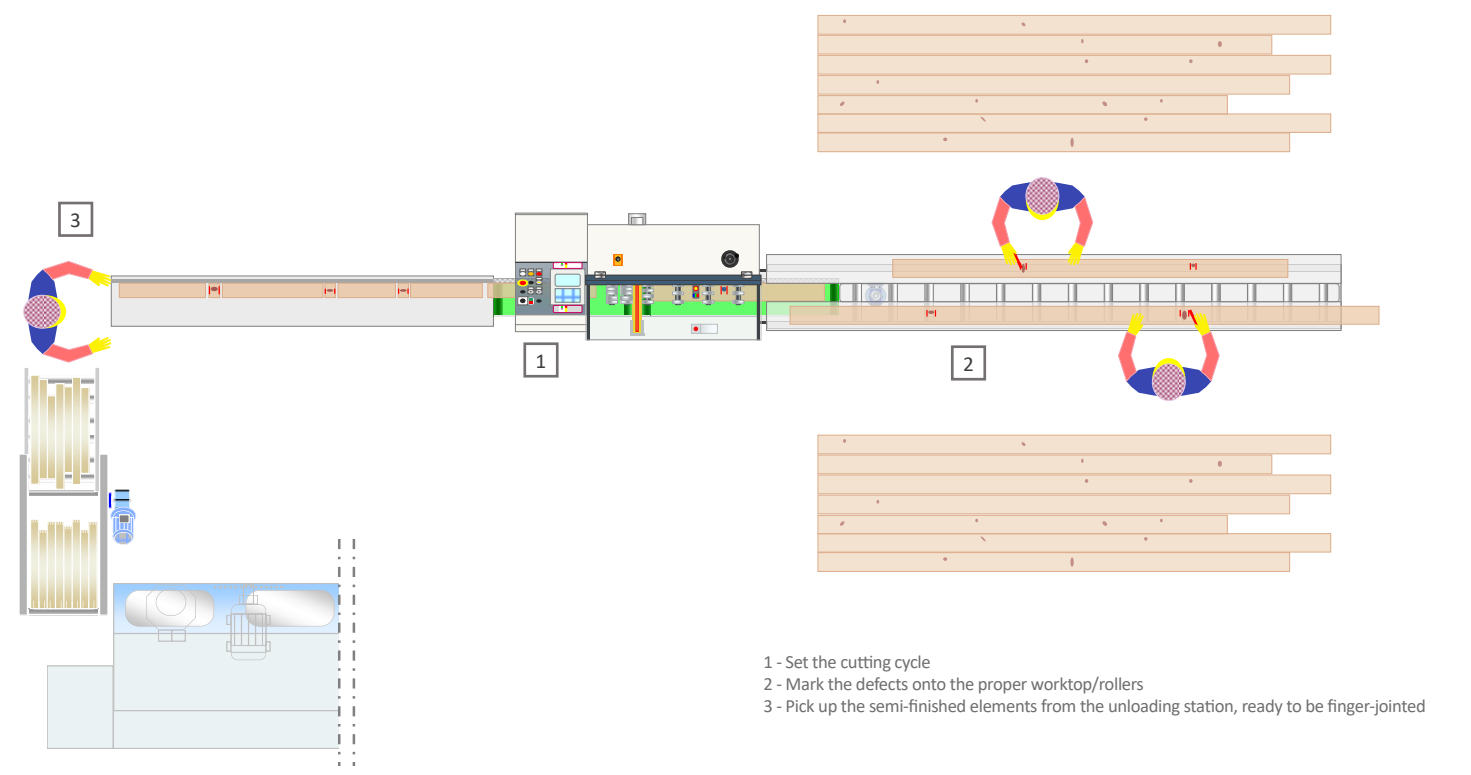
Example of cross-cut sections of the boards	Thickness	Width	Maximum cross-cut section of the board (Width x Thickness)
mm.	mm.	mm.	mm ²
40 x 200 70 x 110 50 x 160	70	200	8000

Quickly selecting lengths, defects and qualities, has never been easier thanks to TRV 1200, the last generation optimizing cross-cut saw with continuous cycle, "made in Cursal".

Versatile machine for excellence, TRV 1200 can be equipped with a wide range of dedicated accessories both in loading and unloading.

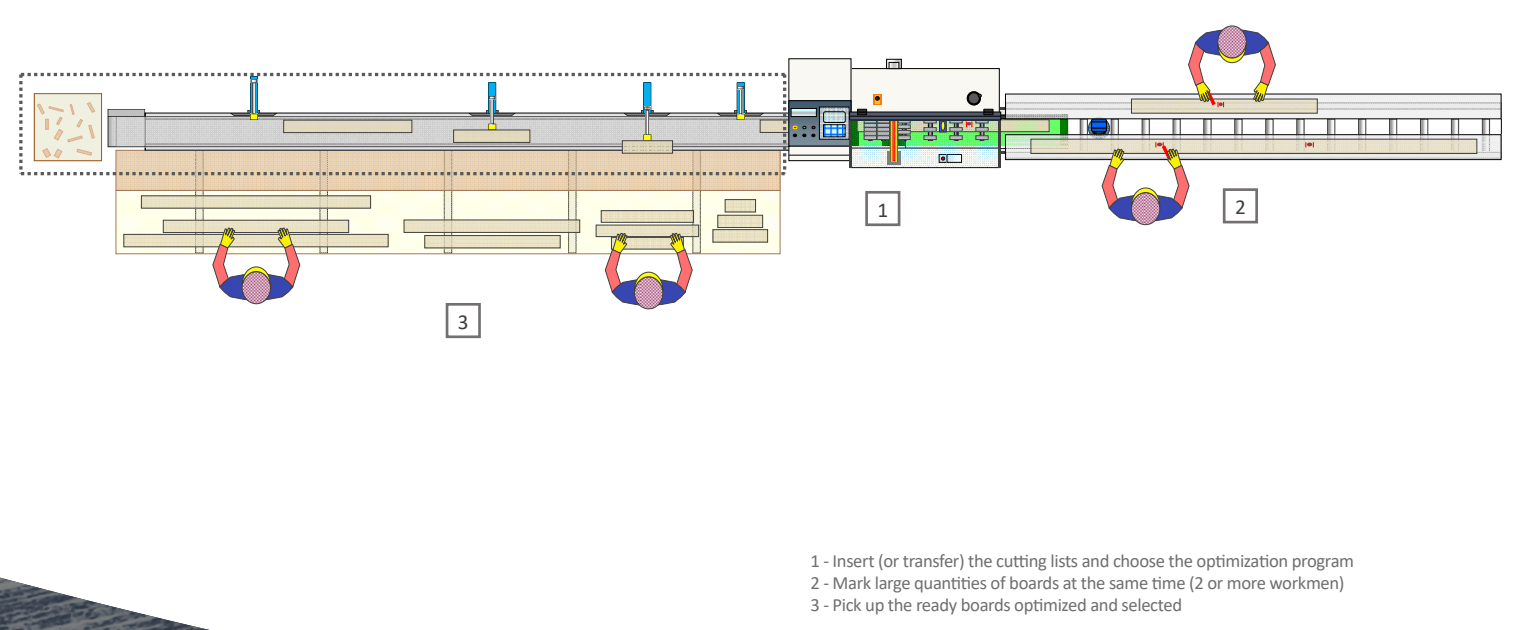


DEFECTING version/cut on the mark system, also in line with finger-joint machine (min. and max. limits for the waste recovery for finger-joint machine)



- 1 - Set the cutting cycle
- 2 - Mark the defects onto the proper worktop/rollers
- 3 - Pick up the semi-finished elements from the unloading station, ready to be finger-jointed

If the aim is making optimum use of timber resource, getting the maximum profit from your wood + cutting time and labor costs, use the "FULL OPTIMIZATION" version



- 1 - Insert (or transfer) the cutting lists and choose the optimization program
- 2 - Mark large quantities of boards at the same time (2 or more workmen)
- 3 - Pick up the ready boards optimized and selected



Dealer

www.cursal.com - info@cursal.com
Cursal s.r.l. via Bradolini, 38/a - 31020 San Fior (TV) Italy
tel. +39 0438 400963 - fax +39 0438 401851

Wood industry experts choose Cursal

ACCESSORIES

Our experts will suggest you the best solutions in loading/unloading to optimize the production cycle

USING A CURSAL CROSS-CUT SAW, MEANS TO INCREASE INSTANTLY PROFIT OF YOUR COMPANY

- Optimize in ultra-fast and smart way, process the most different orders, with no stress for workmen.

TRV 1200 allows to cut **raw / painted single boards** with continuous cycle in a practical and functional way.

- Once you have inserted/recalled the cutting lists by the intuitive touch-screen (or just comfortably from the office) and select the desired optimization, TRV 1200E handles autonomously:

- boards' introduction into the saw (*)
 - feeding and positioning
- +
 - instantaneous data transmission to the CNC and optimization processing
- pieces' evacuations
- selection in qualities, widths, lengths (*)

(*) see Cursal accessories

- **Maximum feeding speed** (it is the fastest in its category, self-limited at **195 m/min** by means of **Brushless servo motor**) and high accuracy are guaranteed by the synergy of an high performance optimizer, an **indestructible structure**, an effective controls of boards (combination between motorized precision belts, CNC controlled/axis and pneumatic press-wheels universal use).

- TRV 1200 is synonymous of flexibility! Use it for **different works**: from the recovery, removal of defects, or, alternatively, use the **potential optimizer for more specific and complex works**, where high level software processing is required.

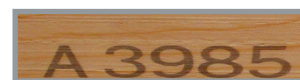


▶ ARRANGE THE UNLOADING

Add the CNC rapid ejectors with contact (or contactless), suitable for rough and painted pieces **FOR SELECTING QUICKLY, NEATLY AND LIMITLESS, DIFFERENT LENGTHS, QUALITIES AND WIDTHS**

▶ COMBINE AUTOMATIC PRINTERS

To **PRINT ALPHANUMERIC FIGURES, BARCODE, LOGOS**. Independent printer's support, linear guide-way with rolling circulation system, protection system with automatic lifting up of the print-head, protocol transmission



▶ ELIMINATE DOWNTIME WITH OUR CUSTOMIZED FEEDERS

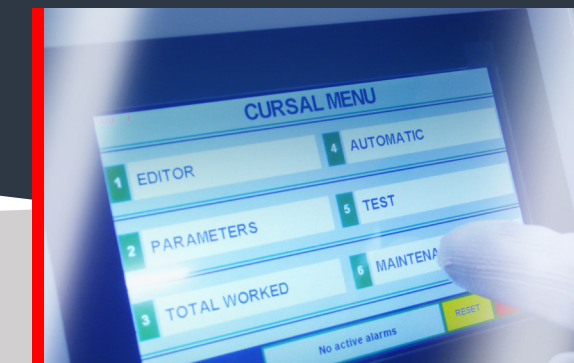
Increase your production with automatic vertical feeding systems up to the automatic chains-feeder that allow the simultaneous marking (by more operators) or the direct loading by means of transfers for a **REAL NON-STOP** feeding

COMPARE AND CONSIDER CURSAL ADVANTAGES



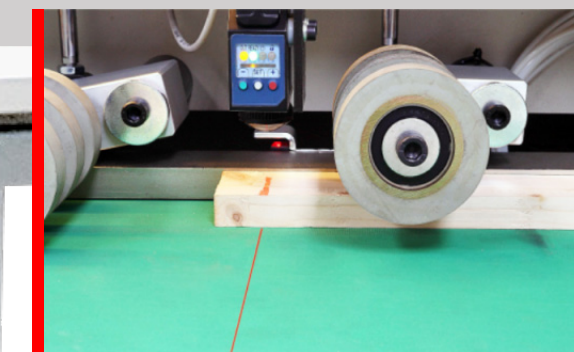
CURSAL powerful optimizer allows you to get the **maximum profit from your timber resource**.

Full optimization guaranteed in any production context, is possible thanks to the constant development of the algorithm of optimization by the Cursal skilled software engineers.



Programming Software

- More than 100 **cutting plans** : widths x qualities
- **Different optimization priorities**
 - Price priority
 - Waste priority
 - Quantity priority
 - Length priority
 - Mixed optimization
- Real or virtual **simulation of the optimization**
- **Check** optimized quantities
- **Optimization inside** the machine:
 - simplification of the process
 - space recovery



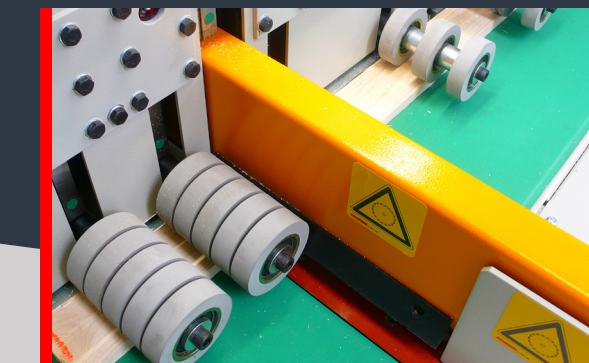
Advantage of the CNC

- **Industrial computer CNC**: guaranteed operation, without production downtime (the multilanguage PC is optional).
- HD **touch-screen** – Import data also by USB stick.
- Intuitive **Software**: quick learning - user friendly.
- Possibility of **teleservice** online.

ADVANTAGES OF GRADE COMPONENTS:

Cursal uses only mechanical-electronic accessories selected from the best suppliers and fully tested to ensure functionality and long term resistance.

The soul of Cursal optimizing cross-cut saw is the **ROBUST CUTTING UNIT**.



The way we control the boards

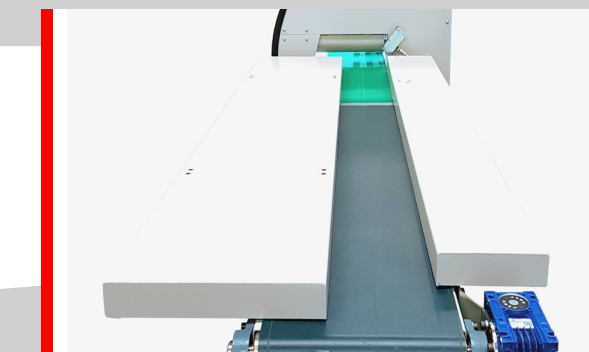
The **TRACTION** belt-system (high grip and without parts that can embed cut pieces), joined with specific **PRESS-WHEELS** (made of high resistance rubber "caoutchouc", anti-sliding with reduced interaxis), guarantee speed, precision, homogeneous pressure on the entire surface of the board.

• **LINEAR GUIDE-WAY** (ROLLING CIRCULATION SYSTEM) with lubrication and dustproof devices.

• **THICK PRESS** for blocking any splinters.

• **BLADE** made of HM steel with alternate teeth (Z=120) in **Widia**.

• Possibility of cutting unit further speeded up with **double pneumatic cylinder**.



Safety - Risk analysis

- All Cursal machinery are CE certified and comply with the provisions of the most recent and strict **safety directives** for the full safety of your employees.
- Adopting of additional **preventive measures to the standard provided** (eg: safety micro with unique lead-covered key). Cursal performs **constant risk analysis** at each minimum variation demanded.